

## PATIENT SURFACE

### GENUINE DARTEX® PU FABRIC

Well respected in the healthcare industry, Dartex® PU fabric is the perfect patient surface solution for treatment and management of pressure injuries through it's 5 key characteristics (**Figure 5**).

FIGURE 5



**FOR YOUR COVER**

### PATIENT & CARER BENEFITS



Designed specifically for pressure care needs



Removable anti-bacterial/anti-microbial cover for infection control management



Waterproof yet breathable for improved skin microclimate



### Apollo Healthcare Technologies Limited

Holme Street, Liversedge, West Yorkshire WF15 6JF  
Tel: +44 (0) 1924 614567 Fax: +44 (0) 1924 607480  
Email: sales@apollo-ht.co.uk www.apollo-ht.co.uk



Due to ongoing research and development, Apollo Healthcare Technologies Ltd, reserve the right to change specifications without prior notice. This will not affect the efficacy of the system. Always consult the user manual for instructions for use.



## Integral Care Chair DX-FR

### Pressure Relief Seating Solution

- SmartTilt Lock
- True Lay Flat Positioning
- Side Transfer Compatible
- Comfort, Support & Protection



[www.apollo-ht.co.uk](http://www.apollo-ht.co.uk)

# Care Chair DX-FR

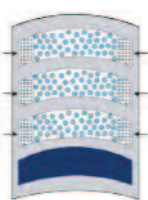
The Care Chair DX-FR unique design promotes skin immersion and envelopment. Pressure on the skin's surface is re-distributed, reducing the risk of pressure injury associated with prolonged sitting or lying. Ideal for Acute, Hospice and Homecare environments. Genuine Dartex® Fabric Surface and our modular pressure relief system maximise comfort while integrated postural contours support optimal positioning. The ergonomic and practical design make it safe and easy to manoeuvre and maintain.

## SPECIFICATIONS

**Seat Height:** 650mm  
**Seat Depth:** 560mm  
**Seat Width:** Small - 410mm  
 Large - 500mm  
**Backrest Height:** 630mm  
**Overall Height:** 1290mm  
**Overall Depth:** 690mm  
**Overall Width:** Small - 610mm  
 Large - 700mm  
**Overall Length:** 1200mm  
**Tilt Angle:** 20°  
**Leg Raise Angle:** 0 - 90°  
**Recline Angle:** 0 - 50°  
**SWL:** 140kg

### ADJUSTABLE FOAM MATRIX

A matrix of air flow chambers promotes skin microclimate and evenly redistributes pressure. A higher density outer perimeter improves lumbar support and longitudinal centering (midline position) while foam cores are moveable for customised positioning.



### SIDE TRANSFER COMPATIBLE FR - FULLY RECLINE ( TRUE FLAT )

Allows for easier side patient transfer, patient personal care and aids when fitting patient slings.



### LOCKABLE CASTORS WITH DIRECTIONAL CONTROL

Front directional castor improves the ability to manoeuvre in a straight line through corridors, making it safer and lighter for attendant use.



### TRUE LAY FLAT POSITIONING

Unique patented design ensures true lay flat positioning whilst SmartTilt intelligently manages chair positioning to prevent unintentional head down Trendelenburg.



### GAS ASSISTED TILT AND LEG RECLINE

Gas assisted tilt, recline and Leg raise allows the chair to be positioned for prolonged periods of use, or set to manage posture and lower limb oedema.



### INTEGRATED TILT, RECLINE & LEG RAISE CAN BE USED TO ACHIEVE TRUE LAY FLAT POSITIONING

### PATIENT SURFACE

Contoured air bladder in the seating surface can be easily inflated and adjusted with the integrated hand pump.

### ERGONOMIC ATTENDANT GRIP HANDLES

Control levers for tilt & recline, push handle for attendant use.

## FEATURES & ACCESSORIES



Padded arms to increase arm height & also to decrease seat width



Table stores away neatly



Table easy to attach



Table does not tilt with the chair so items don't fall off



Directional castors



Integrated manual pump



Push handle with tilt & recline control levers

## CLINICAL CONSIDERATIONS

### OPTIMAL POSITIONING AND POSTURE

- Gentle contouring in the sacral region assists the user in achieving and maintaining optimal positioning and a midline posture.
- In the backrest, a higher-density foam outer perimeter improves midline sitting, while foam cores are movable for customised positioning needs.
- Swing-away backrest wings and armrests decrease the demands on carers when transferring and positioning the user.

### FATIGUE MANAGEMENT

- Integrated tilt, recline and leg raise allow the Care Chair DX-FR to achieve bed-like positioning to facilitate fatigue management and relaxed positioning.

### REMOVABLE COVERS

- Pressure injury management and prevention is the cornerstone of the Care Chair DX-FR's design.
- Figure 1 & 2 show the pressure mapping performance of the Care Chair DX-FR vs A Leading Product (50kg Female mapped).

### OEDEMA MANAGEMENT

- The generous 90° leg raise angle assists with the management of lower limb oedema.

### SAFE HANDLING

- Ergonomic grip handles assist with leverage, while a directional locking castor makes manoeuvring in a straight line through long corridors easy and safe.

### REMOVABLE COVERS

- The cover is easily removed to facilitate laundering or replacement and for compliance with infection control requirements.

Figure 1 - CARE CHAIR DX-FR

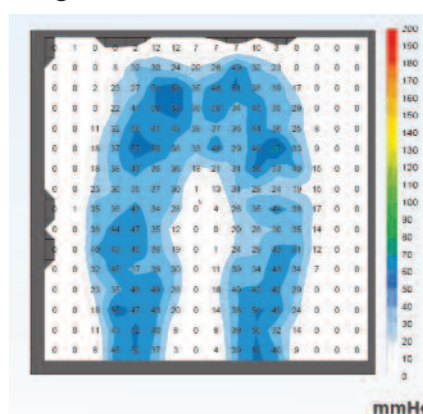
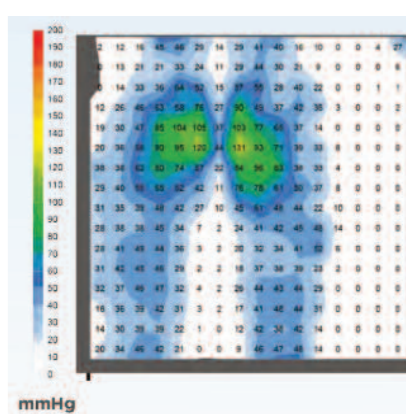


Figure 2 - A LEADING PRODUCT



HIGH PRESSURE

MEDIUM PRESSURE

NO PRESSURE

### IMMERSION & ENVELOPMENT

- Lumbosacral contouring intelligently accommodates the gluteal shelf, allowing users to sit right back into the upholstery for improved positioning and immersion.

- Designed with Dartex™ PU Fabric to maximise skin Immersion (Figure 3) and Envelopment (Figure 4) which is fundamental for a support surface to effectively redistribute pressure improving blood flow which promotes healing.

Figure 3

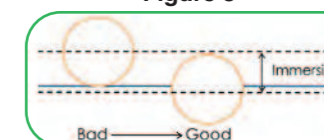


Figure 4

